



# Steel Water Tanks

Aqualine water tanks is Bushmans range of large steel liner tanks, designed and made for Australian conditions. The key features of the Aqualine galvanised steel tank range is that it is an on-site constructed tank with galvanised steel walls and roof trusses with a poly liner to hold the water. This solution offers the best of both worlds when it comes to tanks.

## Why Steel Liner Tanks

If you are looking to store over 20,000 litres of water our premium range of Aqualine steel liner tank will do the job. There are many applications for our steel water tanks, there are also many people who can benefit from their usage. Rural properties can utilise our metal water tanks for house, garden and farm shed rainwater harvesting. Hobby farmers can use large water tanks within their reticulated stock watering systems to bolster the amount of water they are able to source from. Commercial and government organisations such as schools, universities, local governments, commercial buildings and industrial customers can also gain benefits from the use of Aqualine tanks in their organization.

## Rural and Commercial Firefighting Tanks

Designed and manufactured to meet Australian firefighting standards (AS2304).

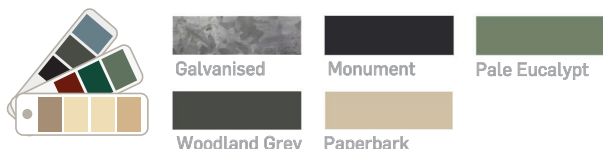
### TANK FEATURES:

- Aqualine steel liner tank capacities range from 20,000L through to 360,000L – there is a size that will suit all applications
- Large water volumes means the cost per litre of storage can be lower
- They are erected on-site, so a large tank can be installed in places with limited access, including indoors
- 0.90mm thick Bluescope galvanised walls
- 1.15mm thick Bluescope galvanised bottom sheet of ASL150 and up
- Aqualine's unique wall corrugation design for strength and support
- 2 panel wall design for less seams
- Heavy duty circumference top support ring
- 40 X 40mm roof trusses for ASL20 to ASL80
- 50 X 50mm roof trusses for ASL100 and up
- Roof trusses are hot dipped galvanised providing long term rust protection
- Galvanised bolt cover
- Walls are bolted together with hi-tensile bolts providing excellent strength
- 100mm overflow
- 50mm outlet and ball valve
- Strainer and light guard
- High quality tank liner made to withstand Australia's harsh conditions
- External removable ladder is standard

## Tank Colours

Bushmans offer a range of colours for the Aqualine tanks which will suit the most common colours used on buildings and fences.

Our most popular colours shown below are a guide only, for true colour representation, contact your Bushmans representative.



\*Additional Colorbond® colours are available on request.

## Galvanised vs Zincalume

Where the base of the tank comes into direct contact with the ground and with higher levels of moisture between the liner and the wall, galvanised steel out performs Zincalume. Additionally, galvanised steel tanks do not need to use sacrificial anodes to reduce corrosion and maintain your warranty. No need for 5 yearly anode replacement.

## Aqualine Poly Liner Tanks

The Aqualine Polytough® tank liner is strong and is manufactured to the highest standards which ensures it holds water over the long term. Polytough® tank liners come in a range of materials including reinforced polypropylene, PVC, reinforced PVC and polyethylene.

## Accessories

There is a range of accessories that can go with your Aqualine water tank:

- Up to 250mm outlet and overflow fittings for increased volume.
- Fire fighting fittings including Stortz fittings suited to the local fire authority.
- Leaf and debris catchment filter two piece with sunguard.
- Internal hot dipped galvanised ladder and bracket which can be removed for safety.
- Additional 50mm outlets and chrome plated ball valves.
- Rainsaver roof water collection system.
- Presstite dust and vermin protection. Presstite is a flexible polyurethane foam sealing strip.
- Water level indicators.
- Additionally Aqualine can supply pumps, filters and other associated products.
- Geo textile base to protect the liner from direct contact with the ground or slab.

Aqualine tank designs have been validated by a professional engineer according to the relevant sections of the Building Code of Australia and the Australian Standard AS/NZS 1170.2



**CERTIFIED PRODUCT**  
**AUSTRALIAN STANDARD**  
AS/NZS 4766:2006  
BMP 557812 Terang  
BMP 557813 Orange  
BMP 557814 Dalby  
BMP 557815 Cavan

## Customer Responsibility

**APPROVALS & LICENCES** All council and other regulatory approvals must be obtained prior to tank construction.

**CONFIRMATION OF SITE PREPARATION** The customer is to advise in writing via email or fax at least 5 days prior to the install date that the site has been prepared in accordance to the Aqualine specifications. The customer should also email photos of the site to Aqualine showing the site and the size of particles in the tank base material.

**SITE ACCESS** Customer must provide clear access to the site for a 10m truck to be parked next to the tank location. If the installation is within a construction site, then access will need to be organised with the site supervisor. If there are site access issues, then you need to contact Aqualine Tanks to arrange any specific requirements.

**PREREQUISITES & INSTALL** It is the customer's responsibility that all the instructions and conditions pertaining to the site and pad preparation are met prior to the install date. Ideally the pad preparation should be completed at least a week prior to the install and construction date.

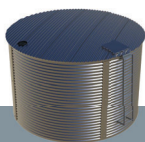
**WIND RATING** The tank design and install instructions are based on the Category B wind rating zone. If the tank is to be installed in a Category C wind zone (North QLD) then talk to our team to find out more.

**ONGOING MAINTENANCE** It is important that the tank and the base be maintained to ensure the integrity of the base, along with the tank structure and liner.

**WATER QUALITY** The standard Aqualine tank liner is designed for rain, bore, creek and river water. If the water has chlorine at greater than 2ppm or the water is from an RO plan then a specialist lining will be required. Failure to follow this guideline will void the liner warranty.

**WARRANTY** The Aqualine steel construction components come with a 10 year tank pro-rata maximum corrosion warranty. Once the tank construction and installation has been completed, the installation completion form has been signed off, the warranty will then commence. Failure to follow the base preparation guide and the post install guidelines will void your warranty.

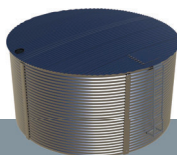
**CANCELLATION** Cancellation of the tank order may result in the forfeiture of your full deposit or part thereof. If you are unclear on any of the information covered in this document, contact Aqualine on 1800 008 888 or email [sales@aqualinetanks.com.au](mailto:sales@aqualinetanks.com.au)



### 20000L

ASL20

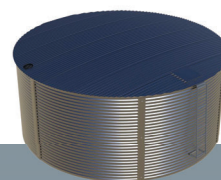
Wall (H) 2.22m  
Wall Diameter 3.46m  
Base Diameter 5.46m  
Base Material 3.85m<sup>3</sup>



### 30000L

ASL30

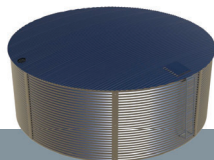
Wall (H) 2.22m  
Wall Diameter 4.32m  
Base Diameter 6.32m  
Base Material 5.16m<sup>3</sup>



### 45000L

ASL45

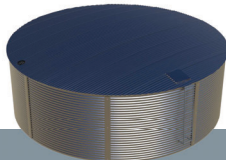
Wall (H) 2.22m  
Wall Diameter 5.18m  
Base Diameter 7.18m  
Base Material 6.66m<sup>3</sup>



### 60000L

ASL60

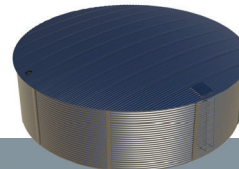
Wall (H) 2.22m  
Wall Diameter 6.04m  
Base Diameter 8.04m  
Base Material 8.36m<sup>3</sup>



### 80000L

ASL80

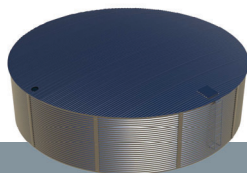
Wall (H) 2.22m  
Wall Diameter 6.90m  
Base Diameter 8.90m  
Base Material 10.25m<sup>3</sup>



### 100000L

ASL100

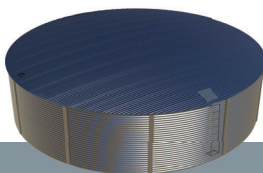
Wall (H) 2.22m  
Wall Diameter 7.76m  
Base Diameter 9.76m  
Base Material 12.33m<sup>3</sup>



### 125000L

ASL125

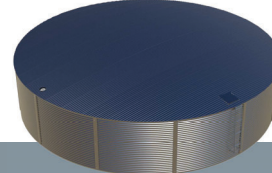
Wall (H) 2.22m  
Wall Diameter 8.62m  
Base Diameter 10.62m  
Base Material 14.60m<sup>3</sup>



### 150000L

ASL150

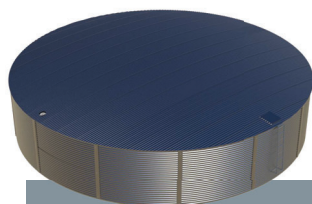
Wall (H) 2.22m  
Wall Diameter 9.48m  
Base Diameter 11.48m  
Base Material 17.07m<sup>3</sup>



### 180000L

ASL180

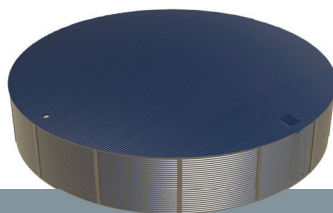
Wall (H) 2.22m  
Wall Diameter 10.34m  
Base Diameter 12.34m  
Base Material 19.73m<sup>3</sup>



### 210000L

ASL210

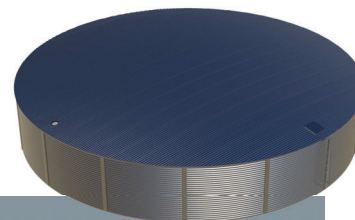
Wall (H) 2.22m  
Wall Diameter 11.20m  
Base Diameter 13.20m  
Base Material 22.58m<sup>3</sup>



### 245000L

ASL245

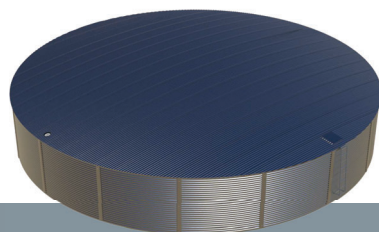
Wall (H) 2.22m  
Wall Diameter 12.06m  
Base Diameter 14.06m  
Base Material 25.63m<sup>3</sup>



### 280000L

ASL280

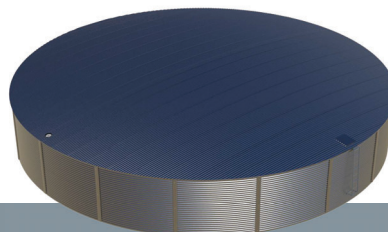
Wall (H) 2.22m  
Wall Diameter 12.92m  
Base Diameter 14.92m  
Base Material 28.86m<sup>3</sup>



### 320000L

ASL320

Wall (H) 2.22m  
Wall Diameter 13.78m  
Base Diameter 15.78m  
Base Material 32.29m<sup>3</sup>



### 360000L

ASL360

Wall (H) 2.22m  
Wall Diameter 14.64m  
Base Diameter 16.64m  
Base Material 35.91m<sup>3</sup>



# Installation

## Prep & Completion Requirements

Aqualine tanks are designed for installation on a flat level surface that is able to withstand the weight of a full water tank. To do this the site must be prepared correctly. The correct preparation of your site will ensure that the tank will be trouble free for many years. There are three types of bases for Aqualine Tanks, these being free draining sand, a crusher dust base or a concrete pad base.

*NB: If the pad is not prepared properly and the install team arrive and have to wait or come back, the customer will be responsible for any expenses including but not limited to travel, accommodation and wages incurred by Aqualine.*

## Concrete Base

The concrete slab must be designed to carry the weight of the tank filled with water. Aqualine can provide specific slab diagrams for basic installations. For more complex installations an engineer may be required.

## Sand Or Crusher Dust Base

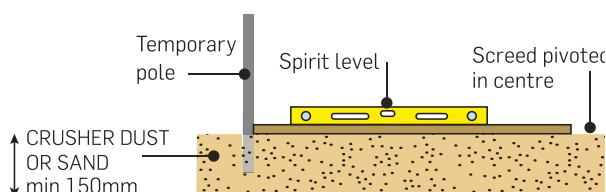
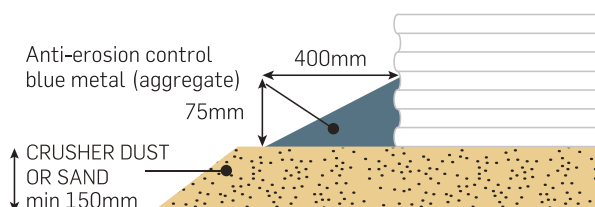
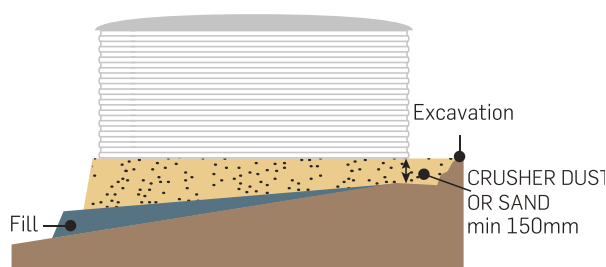
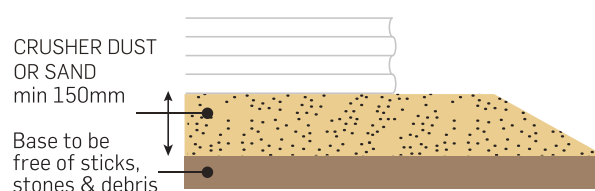
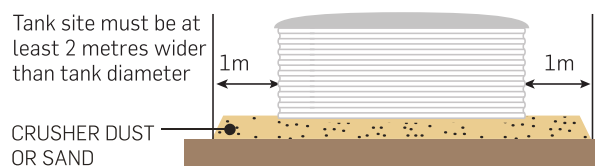
1. Preparing the Sand or Crusher Dust Pad:
  - The sand or crusher dust pad must have a diameter which is more than 2 metres wider than the tank diameter.
  - The preferred base material should be free draining and must be free of any sharp objects, clay lumps, stones or material such as roots.
  - If crusher dust is used it must have particle sizes of less than 5mm and the tank base must have a Geotextile covering to protect the liner.
  - The pad must be stable prior to construction
  - The fill must be a minimum depth of 150mm and compacted to a minimum capacity of 50kPa.
2. It is important that the pad is 100% level.
3. For a tank base cut into a sloping site, make sure there is adequate drainage to direct water away from the pad.
4. A retaining wall may be required on sloping sites.

*NB: The cubic metres of base material is for a flat site with a minimum of 150mm. Base preparation guidelines are designed for stable soils. Customers should consult their engineer on specific base and slab specifications. Tanks located in cyclonic regions will require a concrete ring beam.*

Code	base material	Code	base material
ASL20	3.85m <sup>3</sup>	ASL150	17.07m <sup>3</sup>
ASL30	5.16m <sup>3</sup>	ASL180	19.73m <sup>3</sup>
ASL45	6.66m <sup>3</sup>	ASL210	22.58m <sup>3</sup>
ASL60	8.36m <sup>3</sup>	ASL245	25.63m <sup>3</sup>
ASL80	10.25m <sup>3</sup>	ASL280	28.86m <sup>3</sup>
ASL100	12.33m <sup>3</sup>	ASL320	32.29m <sup>3</sup>
ASL125	14.60m <sup>3</sup>	ASL360	35.91m <sup>3</sup>

## Day Of Installation

- If the fitting and strainer locations have not been specified, then someone will need to be on-site to instruct the installers on the required locations, this must be finalised prior to truss installation.
- Once the installation has been completed the tank must have 300mm of water supplied by the customer to secure and set the liner. **This must happen on the day of installation.** If water is not added on the day this can void the warranty.
- A 75mm high by 400mm wide layer of blue metal or aggregate must be placed around the circumference of the tank to prevent erosion when water runs off the roof. If no blue metal or aggregate is placed the warranty will be voided.
- Inspection hatches should be locked to prevent unauthorised entry (customer to provide lock).





**DELIVERY** Bushmans provides specialist delivery and fit out services; this ensures that your new tank is delivered in 1<sup>st</sup> class condition and is fitted out to suit your individual needs. Our trucks and equipment are designed for efficient delivery and our staff are fully trained in unloading and tank fit out. Before we can install your new tank the site must be prepared to ensure the tank can be erected and installed correctly. Our tanks are fully installed by a professionally trained install team, to ensure that the tank is assembled and installed to the highest standards. When the tank is complete, it is ready to hold water.



**GUARANTEE** Our tanks are Australian made and Bushmans have been designing and manufacturing tanks since 1989. This experience and know how ensures you receive a quality product and peace of mind. Bushmans uses the latest in manufacturing technology and processes.



**10YR GUARANTEE**

Poly & Steel Water Tanks

**5YR GUARANTEE**

Fertiliser & Molasses Tanks

**1YR GUARANTEE**

Troughs, Cups & Saucers

**QUALITY** Experienced staff will answer all your enquiries and help you find the best solution for your water tank or industrial liquid storage requirement. All Bushmans factories are fully certified and qualified to manufacture tanks to the AS/NZS4766 Quality Standard, ensuring products produced in each of our plants are consistently made to the specified quality standard.



Your Local Bushmans Distributor:



**CERTIFIED PRODUCT  
AUSTRALIAN STANDARD**

AS/NZ:S 4766:2006  
BMP 557812 Terang  
BMP 557813 Orange  
BMP 557814 Dalby  
BMP 557815 Cavan